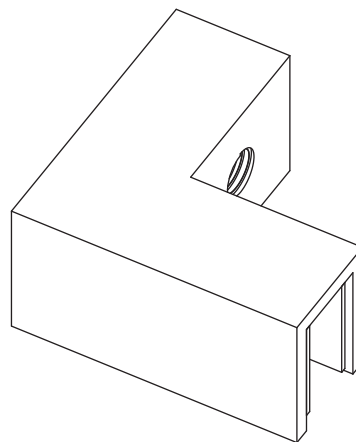


Installation Manual For 10.GGC.4016 90° Glass to Glass Sleeve Clamp



NOTICE TO HOMEOWNER

- We recommend that this product is installed by a qualified professional plumber.
- Please check this product immediately to ensure that it has not been damaged and is complete. Before installation, please make sure this product is the correct model and you have all the parts required for installation and use.
- Please flush the water system to ensure that no metal swarf, solder, and other impurities can enter the product.
- Turn off water supply before commencing work.
- Please read these instructions carefully and retain for future reference.

BEFORE YOU BEGIN

- You must observe all local plumbing laws and codes.
- Do not instal valve if it does not meet local plumbing codes.
- Shut off the main water supply.

Installation Manual For 10.GGC.4016

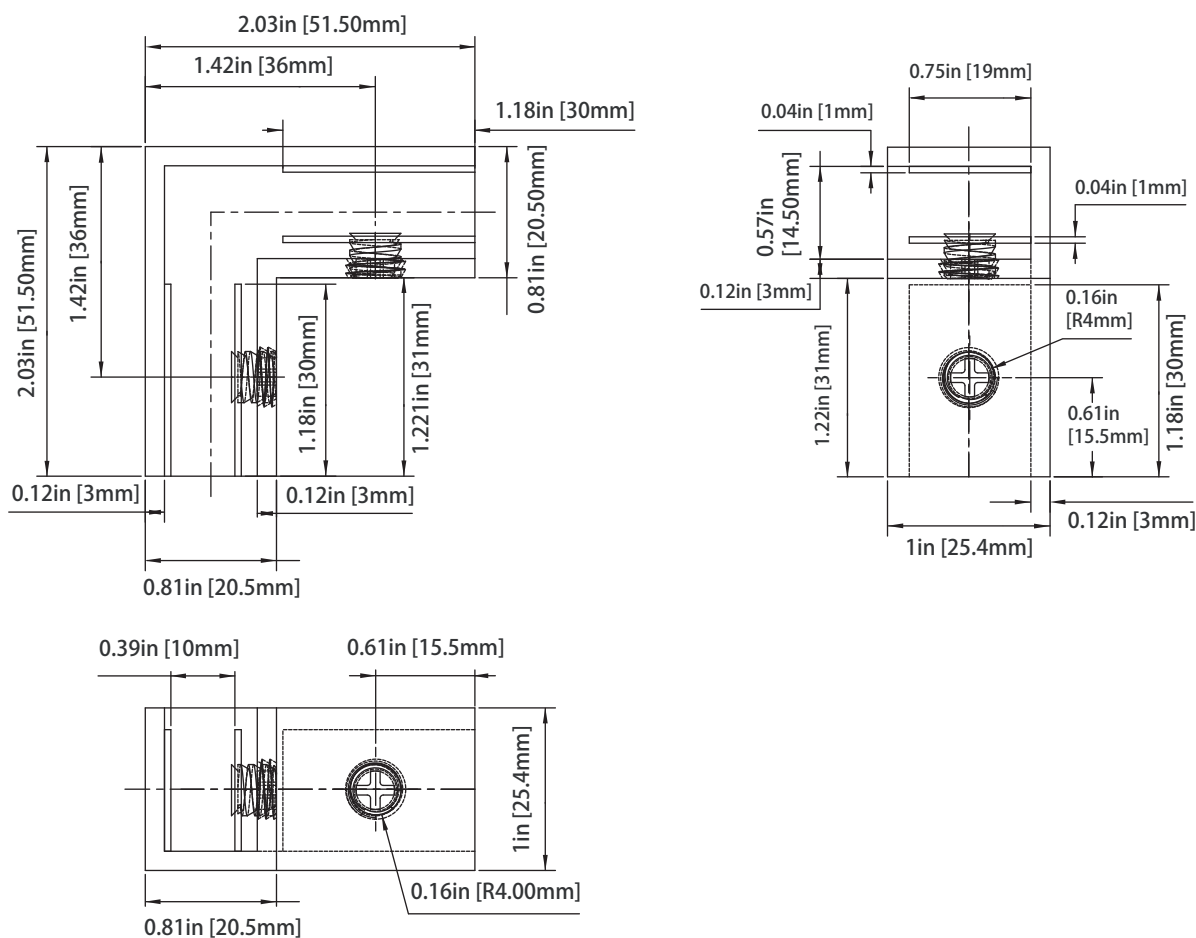
90° Glass to Glass Sleeve Clamp

| TABLE OF CONTENTS | |
|------------------------------------|---|
| OPERATING SPECIFICATIONS | 3 |
| INSTALLING HINGES | 5 |

OPERATING SPECIFICATIONS

- **Glass Size:** 3/8" to 1/2" (10 to 12 mm) Tempered Glass only
- **Construction:** Solid Brass
- **Included:** Clamp body, glazing gaskets, mounting screws, and fabrication template
- **Use:** Residential Bath Commercial Hotel Applications

TECHNICAL DRAWING



Critical Dimensions in Inches [mm]

SPECIFICATION

• GASKET SPECIFICATIONS:

For 3/8" (10mm) Glass: Use One Thick Gasket On Each Side

For 1/2" (12mm) Glass: Use One Thin Gasket On Each Side

• GASKET INSTRUCTIONS:

Only use tempered safety glass, To prevent damage to the clamp finish
During Installation, do not use power tools when installing these clamps.

• CARE & CLEANING GUIDELINES:

For best result, keep the following recommendations in mind when caring for your shower door hardware. Your shower door hardware should be dried daily with a soft towel or cloth to insure its original finish.

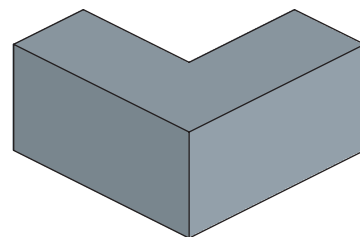
Do not use harsh cleaners or chemicals on the hardware, as many of the components are coated with a clear lacquer that will become damaged beyond repair.

Always test your cleaning solution in an inconspicuous area prior to cleaning the entire hardware surface.

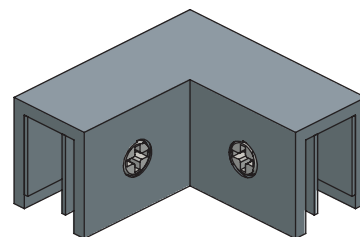
Wipe surfaces clean using a soft dampened cloth or sponge and rinse completely with warm water immediately after applying the cleaning solutions.

Use only small amount of liquid, gentle cleaner.

Never use abrasive products, sponges, or wire scrub brushes while cleaning hardware.



FRONT ISO VIEW

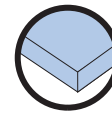


REAR ISO VIEW

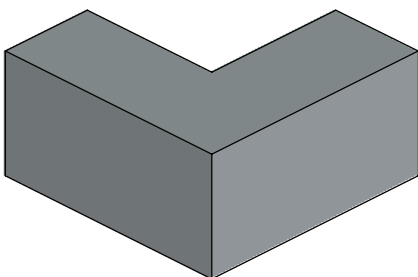
INSTALLATION

GLASS FITMENT DETAILS :

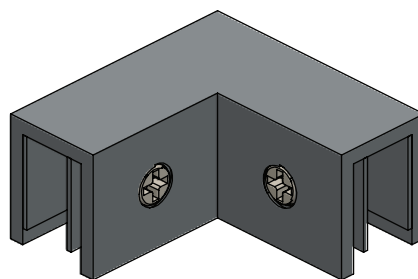
- Glass clamp with nylon-tipped Allen set screw, designed for a 90-degree "slip fit".
- Suitable for tempered glass ranging from 3/8" to 1/2" thickness.
- No need for glass fabrication.
- Corrects misalignment issues at the top edge of glass panels.
- Ideal for securely holding glass panels together during silicone sealant curing.
- Leaves a minimal gap of less than 1/8".
- Complements all plated hardware with finished edges.
- Prevents panels from separating over time.



**USE ONLY
MONOLITHIC
TEMPERED GLASS**

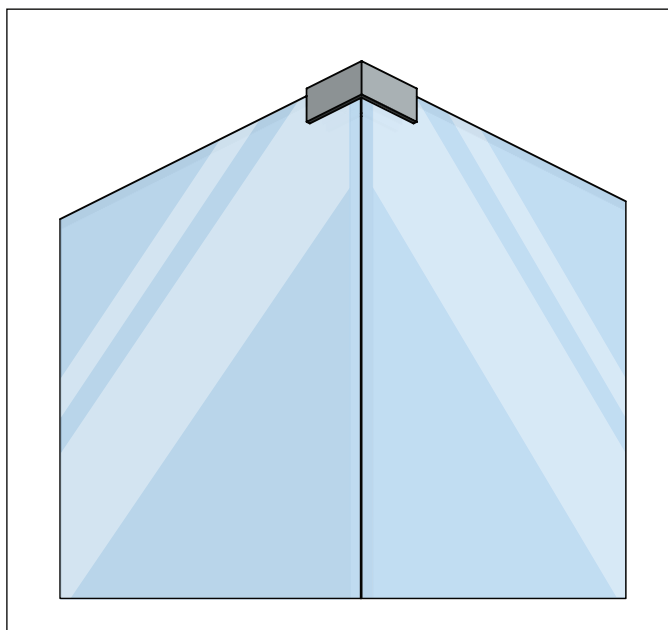


FRONT VIEW

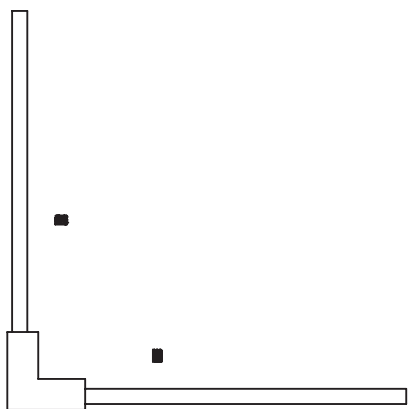


REAR VIEW

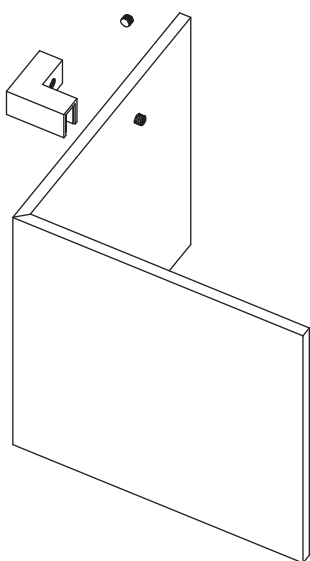
SLIP FIT REPRESENTATION



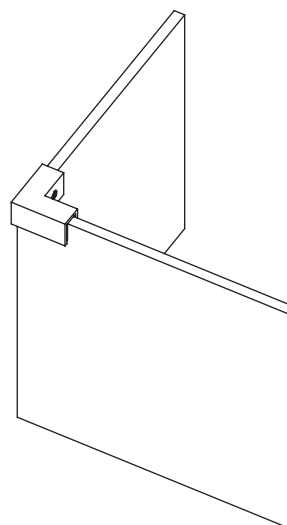
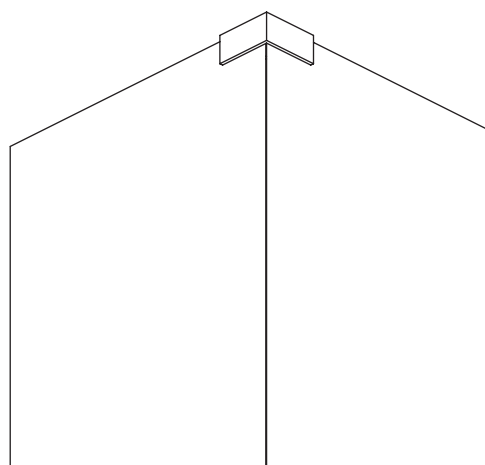
INSTALLATION



TOP EXPLODED VIEW-1



ISO EXPLODED VIEW-2



ISO VIEW-3